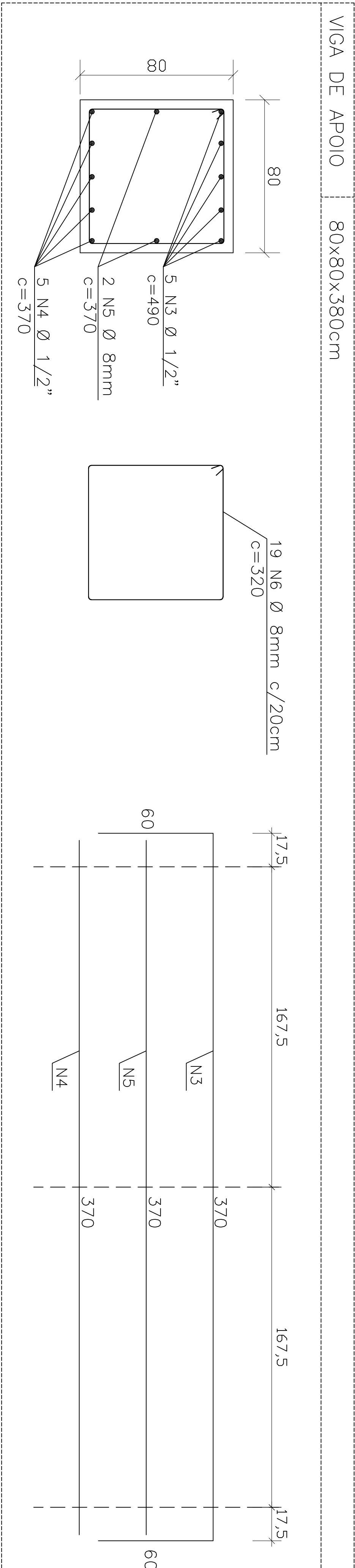


FUNDAÇÕES - PASSARELA 2B						CONCRETO FCK 25 MPa	
AÇO Aço-50						VOLUME	
ESPEC.	NUM.	DIAM.	QUANT.	C. UNIT. (cm)	C. TOTAL (cm)	PESO (kg/m)	PESO (kg)
TUBULÃO	N1	1/2"	16	360	5760	1,00	57,60
	N2	8mm	20	540	10800	0,40	43,20
VIGA	N3	1/2"	5	490	2450	1,00	24,50
	N4	1/2"	5	370	1850	1,00	18,50
	N5	8mm	2	370	740	2,00	2,96
	N6	8mm	19	320	6080	0,40	24,32
SUBTOTAL							171,08
TOTAL X2							342,16
							9,74

[illegible]